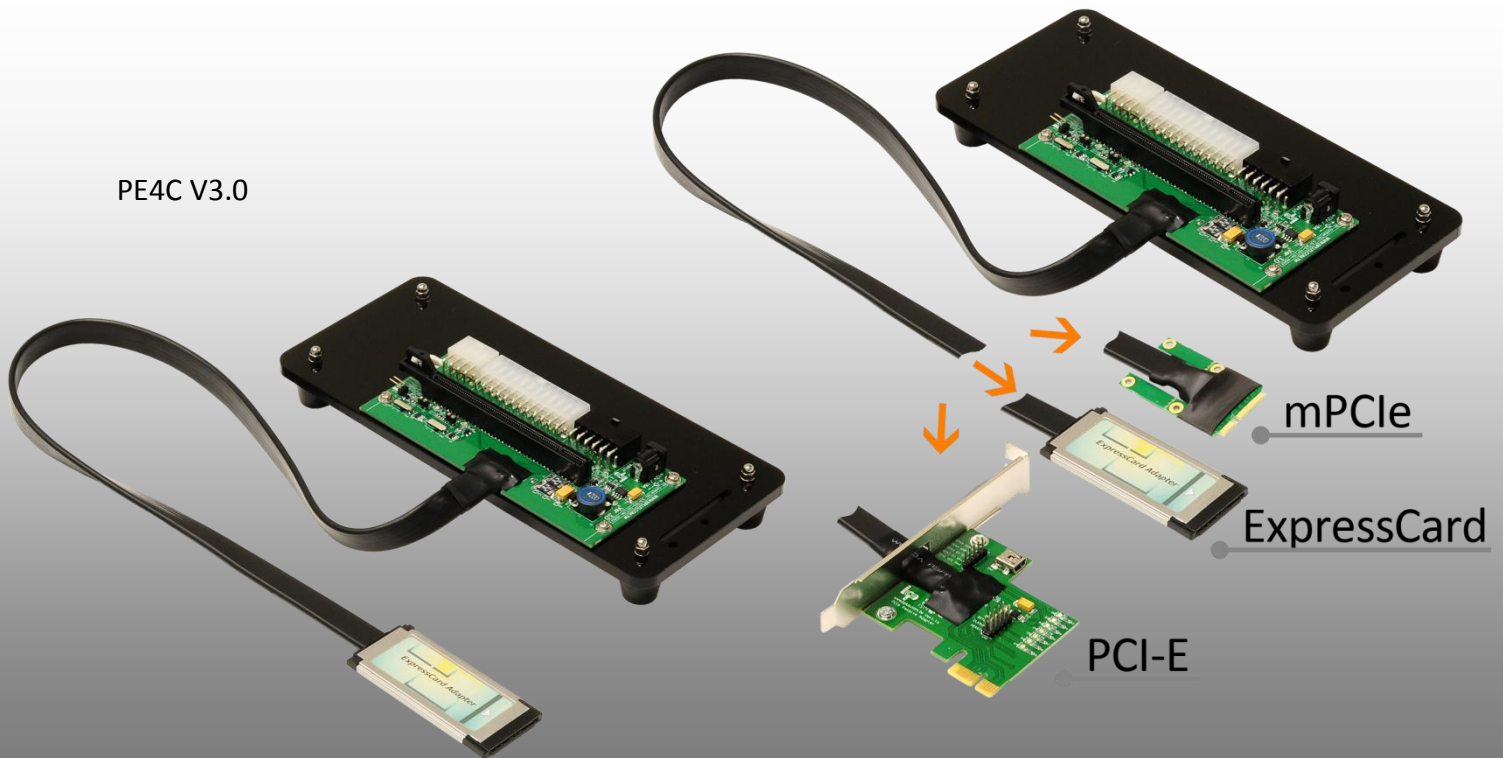


PE4C V3.0

PCIe x16 Adapter

Product > eGPU > PE4C V3.0



First Impression

The PE4C V3.0 is designed for Notebook PCs that converts PCI Express 16X Add-on Card to ExCard or mPCIe or PCIe connector.

This adapter allows you to use your existing PCI-E 16X Card in the notebook PC for gaming.

Function

- ◆ VGA card connection to computer or notebook PC
- ◆ Support dual channel signal transfer.
- ◆ Support two delay switch to avoid registration problems when boot.
- ◆ Special foot cone, avoid graphics card fan noise.
- ◆ Support **ATX power** boot together function.
- ◆ DC Jack: External 5V Power Input.
- ◆ Support Suspend Clock
- ◆ Support two sets external pin to setup delay time.
- ◆ Option Products :
 - PE4C-EC060A V3.0 –PCI-E to Express card adapter
 - PE4C-PM060A V3.0 –PCI-E to mPCI-e adapter
 - PE4C-HP060A V3.0 –PCI-E to PCI-E adapter

Specification

- ◆ **PE4C-PM060A V3.0** allows user to test PCI Express x16 Add-in-Card on the **PCI Express mini card (mPCIe) slot**.
- ◆ **PE4C-EC060A V3.0** allows user to test PCI Express x16 Add-in-Card on the **ExpressCard slot**
- ◆ **PE4C-HP060A V3.0** allows user to test PCI Express x16 Add-in-Card on the **PCI-e slot**
- ◆ **Compliant with PCI Express 3.0 Specification:** Maximum 8Gbps
- ◆ Power Supply: ATX PSU, DC adapter, USB power connect, **Three select one.**

System Requirements

- Notebook PC or Desktop PC with an available **ExpressCard slot** or **PCI-s slot** or **PCI Express mini card slot**
- Windows 8 (32-/64-bit) / 7 (32-/64-bit) / Vista (32-/64-bit) SP2 or later/ XP (32-/64-bit) SP3 or later

Notice:

1. PE4C V3.0 is PCIe 1-Lane 5.0Gbps bandwidth limit passive adapter in compliance with Expresscard 2.0 specification.
2. Basically, PCIe add-on card designed for desktop. We can't guarantee its compatibility with your laptop. Depends on OS version, notebook's BIOS, device driver,
3. Almost PCIe 16x video card can't get enough memory resource allocated. Can't work in your laptop.
4. External Power ATX Power required.
5. All of interoperability is not guaranteed.

Dimension & Weight

22cm x 9.5cm x 4cm
200g

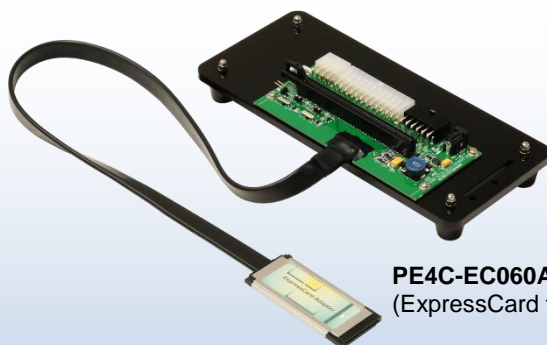
Certification

RoHS

Operating Temperature

0 ~ 70°C

PE4C-EC060A V3.0 Package Contents



G0086
(M3 Screw Nut) x2



G0023
(M3x12 Screw) x2



G0020
(M3x60+6 Pillars) x2



G0021
(M3x50+6 Pillars) x2

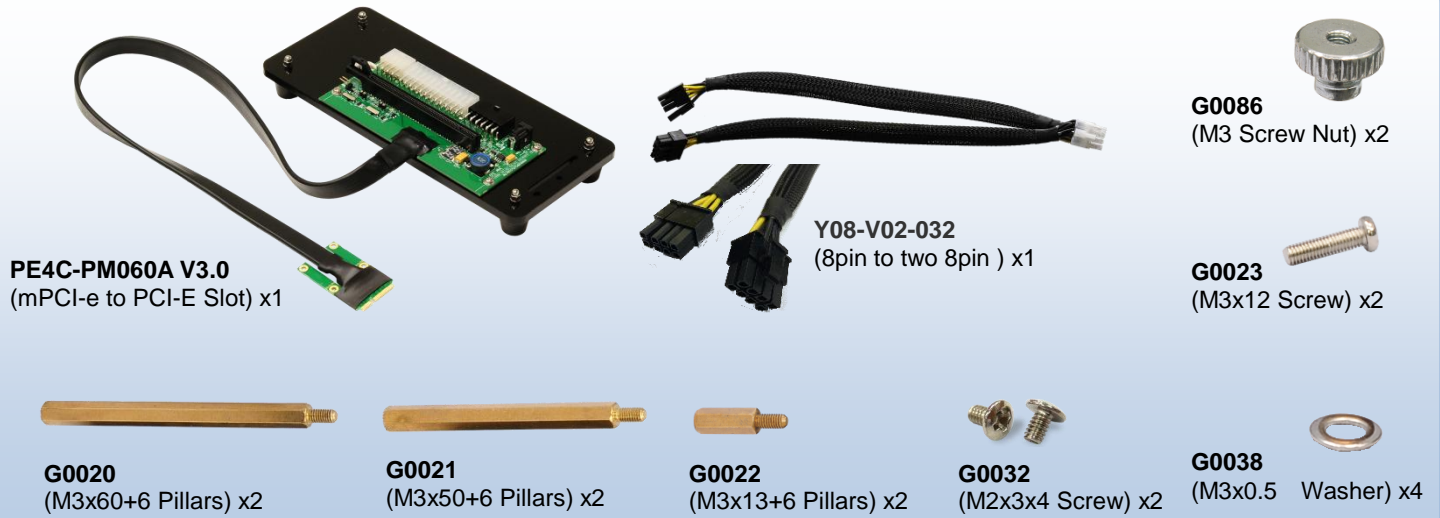


G0022
(M3x13+6 Pillars) x2



G0038
(M3x0.5 Washer) x4

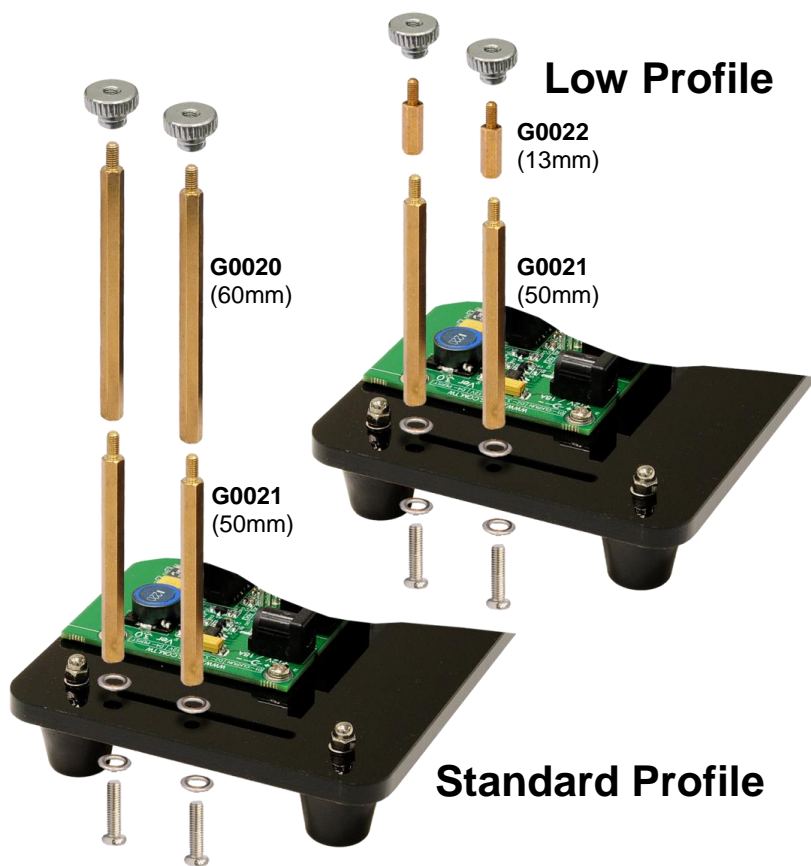
PE4C-PM060A V3.0 Package Contents



PE4C-HP060A V3.0 Package Contents



Installing PE4C V3.0

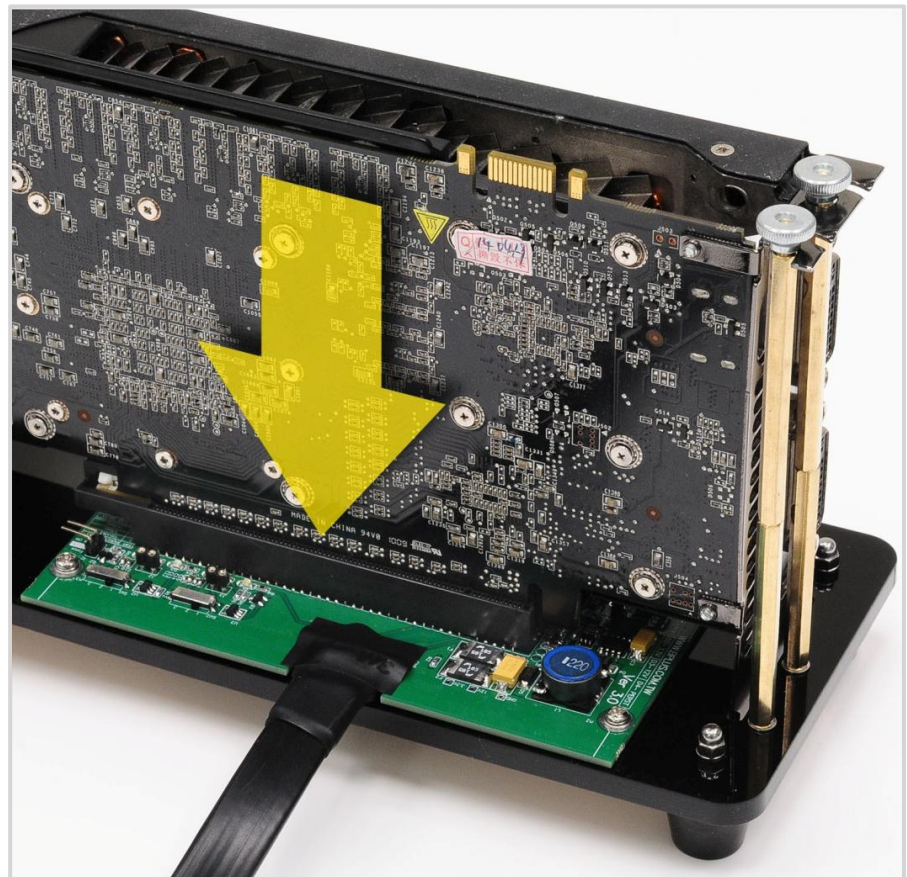


Step1.

By order of the figure, install pillars.

Step2.

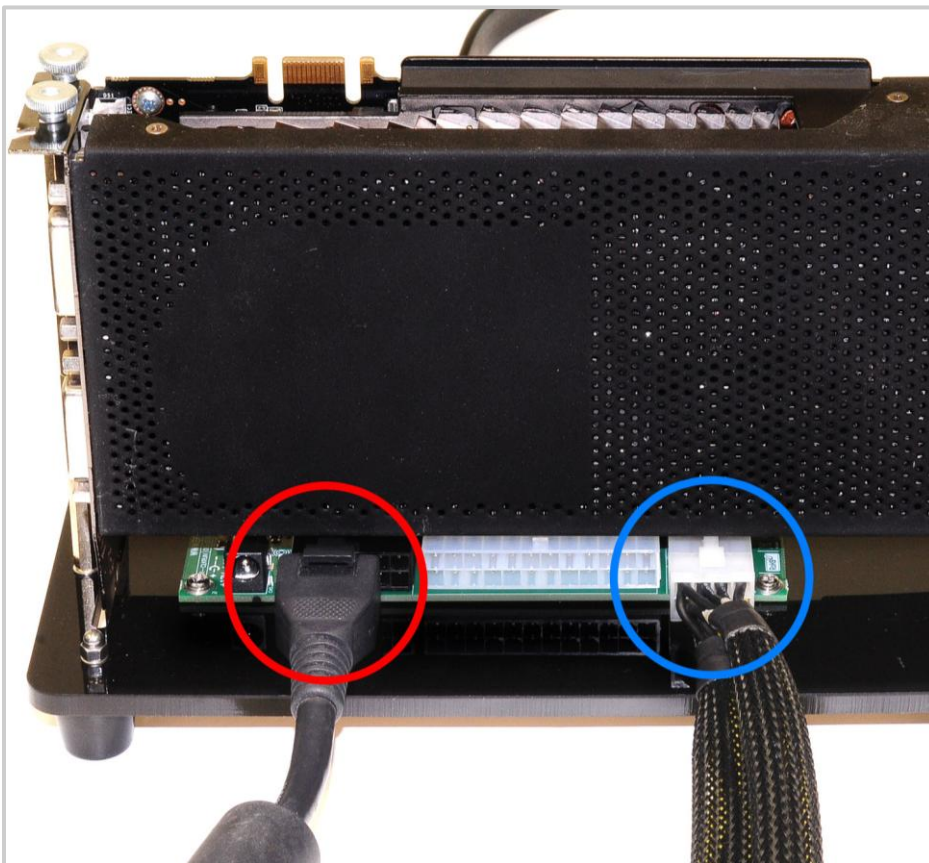
Insert the VGA card,
Be sure to align the PCI slot.





Step3.

To locking nut by clockwise

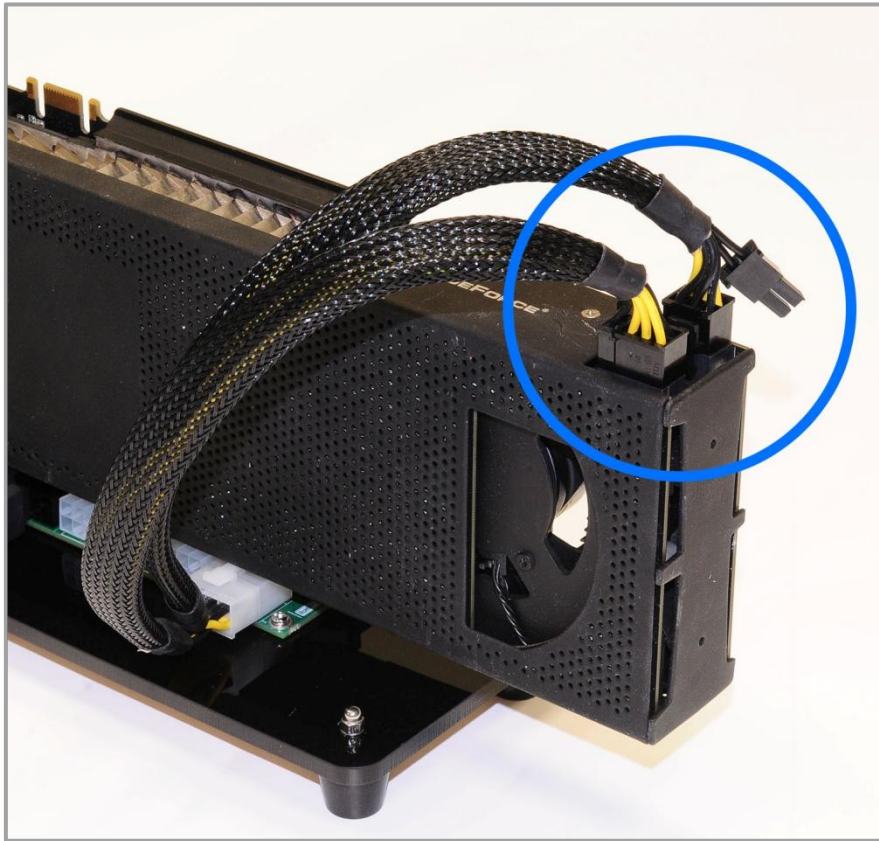


Step4.

Insert the power cable,
It is necessary to connect
the ATX power cable,
But 8pin power is depend
on your VGA card.

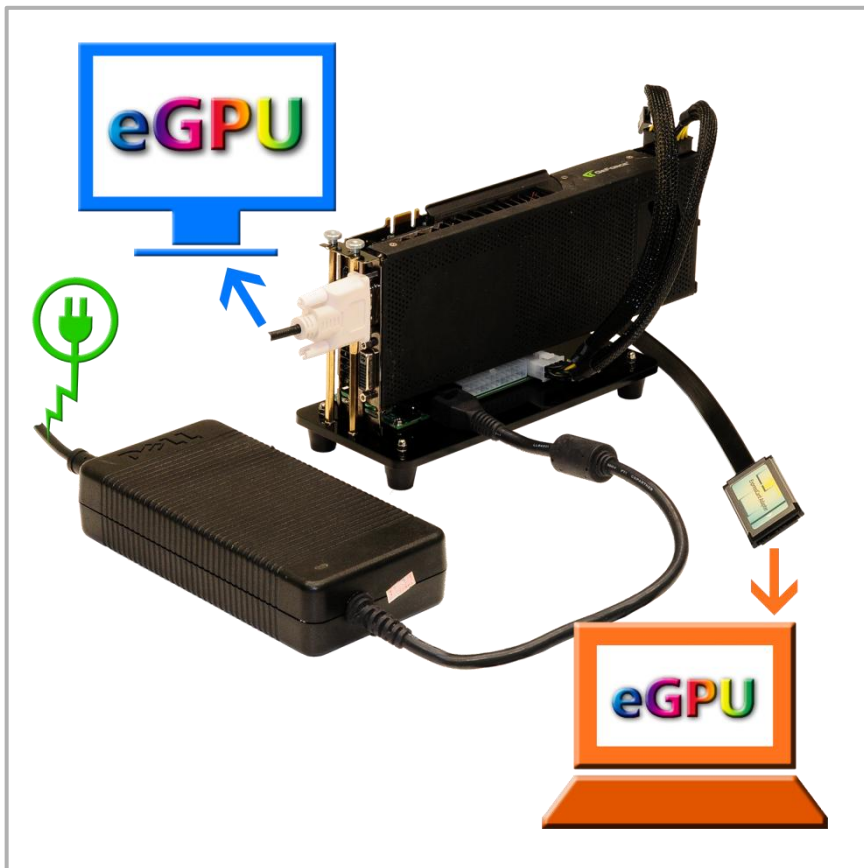
NOTE:

In this step,
When you connect the ATX
power cable, please make
sure the PSU off.



Step5.

Connect the power cable to your VGA card,
If your VGA card don't need external power connection, you can skip this step.



Step6.

Connect PE4C's ExCard / mPCIe / PCIe X1 portion to your computer.
And enjoy the wonderful visual effects

